

# HDMI EXTENDER



**Transmitter**



**Receiver**

## Package Contents-

- 1x Transmitter
- 1x Receiver
- 1 user manual
- 2x Power adapter DC 12V with lock
- 1x HDMI 1.2M cable
- 1x IR Blaster Cable(Peak Wavelength 940nm)
- 1x IR Receiver Cable
- 4x screws
- 8x foot pads

## Features

- Supports HDMI 1.4 with 3D function
- Supports HDMI 1.2 and 1.3a
- HDCP Compliant
- Supports 3D pass-through
- Supports CEC pass-through
- Support RS-232(Bi-direction transfer)
- Supports all frequency band IR control(Bi-direction transfer)
- Full HD support: 1080p@60Hz, 3D and 4Kx2K
- HD-baseT technology
- Use CAT.5 cable to install easily

## Specifications

Function	Transmitter	Receiver
HDMI In Connector	HDMI A-Type Female x 1	None
HDMI Out Connector	HDMI A-Type Female x 1 (By pass)	HDMI A-Type Female x 1
RJ-45 Connector		1
IR OUT	3.5ψ Stereo Jack x 1	3.5ψ Stereo Jack x 1
IR IN	3.5ψ Stereo Jack x 1	On-board x1 3.5ψ Stereo Jack x 1
Max. Resolution	1080P 60Hz	
Cable Distance	100 m (Max.)	
Power Adapter (Min.)	DC 12V with lock	
Housing	Metal	
Weight	305g	308g
Dimensions (LxWxH)	150x80x25 mm	

-1-

## LOCAL FRONT VIEW



1. IR OUT
2. IR IN
3. HDCP LED
4. LINK LED
5. MODE LED
6. POWER LED

## LOCAL REAR VIEW



1. Power jack (12V DC)
2. LINK (RJ-45 Connector)
3. HDMI BYPASS
4. HDMI IN
5. RS-232

## REMOTE FRONT VIEW



1. IR2 IN
2. IR OUT
3. IR1 IN
4. HDCP LED
5. LINK LED
6. MODE LED
7. POWER LED

## REMOTE REAR VIEW



1. Power jack (12V DC)
2. LINK (RJ-45 Connector)
3. HDMI OUT
4. RS-232

# Installation

1. Be sure to turn OFF your HD source and HDTV.
2. Connect the HDMI extension cable between HD source and the "HDMI IN" port of Transmitter.
3. Connect the HDMI extension cable between the HDTV and the "HDMI OUT" port of Receiver.
4. Connect CAT.5 cables between the Transmitter "LINK" port and the Receiver "LINK" port of extender.
5. Connect the power cord and power up the extender.
6. Turn on your HD source and HDTV.

※ When a HDMI device(TV) connected to BYPASS port, the remote video output will be disable.

## IR Receiver Cable Directions:

Plug IR Receiver into the HDMI-ERW "IR2 IN" port and place the IR Receiver where you can point to it easily with your IR remote controller.

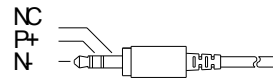
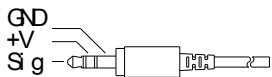
## IR Blaster Cable Directions:

Plug IR blaster cable plug into HDMI-ELW "IR OUT" port, place IR Blaster in front of your HD source IR sensor, which is located on the front-panel.

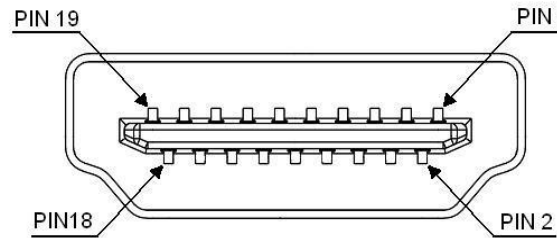
## Additional Options

Select any additional options you may require.

1. IR Receiver Cable

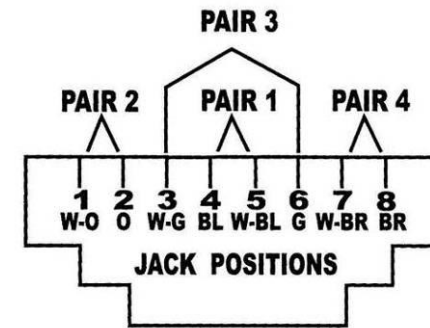


## Technical Specifications Output Signal



Pin #	Signal	Pin #	Signal
1	TMDS Data 2+	11	TMDS Clock Shield
2	TMDS Data 2 Shield	12	TMDS Clock -
3	TMDS Data 2-	13	CEC
4	TMDS Data 1+	14	Reserved (N.C. on device)
5	TMDS Data 1 Shield	15	SCL
6	TMDS Data 1-	16	SDA
7	TMDS Data 0+	17	DDC/CEC Ground
8	TMDS Data 0 Shield	18	+5 Power
9	TMDS Data 0-	19	Hot Plug Detect
10	TMDS Clock+		

Conductor Identification	RJ45 Pin Assignment	Color Code for Conductor
Pair 1	5	White-Blue
	4	Blue
Pair 2	1	White-Orange
	2	Orange
Pair 3	3	White-Green
	6	Green
Pair 4	7	White-Brown
	8	Brown



## Trademarks:

All the companies, brand names, and product names referred to this manual are the trademarks or registered trademarks belonging to their respective companies.